



100W LED UFO High Bay Light



Features

- Lumileds LED, high luminous efficiency and long working life.
- Unisolated power supply LED Driver, the wide range input voltage AC100-277V.
- Die Cast aluminium cooling design, high quality and better cooling for LED $T_j < 85^\circ\text{C}$.
- Excellent Optics design, greatly improve the light utilization and evenness.
- Motion sensor Control Available (Option).

Product Applications

WISDOM UFO LED High Bay Light series can be widely used in outdoor lighting (Wet location), Excellent for Museums, Art Galleries, Underground parking lot, Buildings, Industrial areas, Residential areas, Parking lot, Schools and etc, and many more applications.



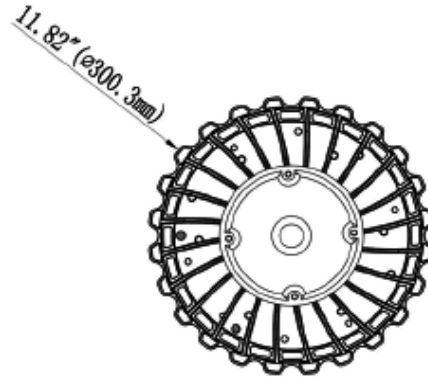
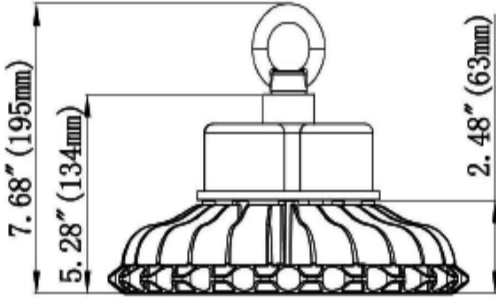


Specifications

Unit : inch(mm)

Structure Features

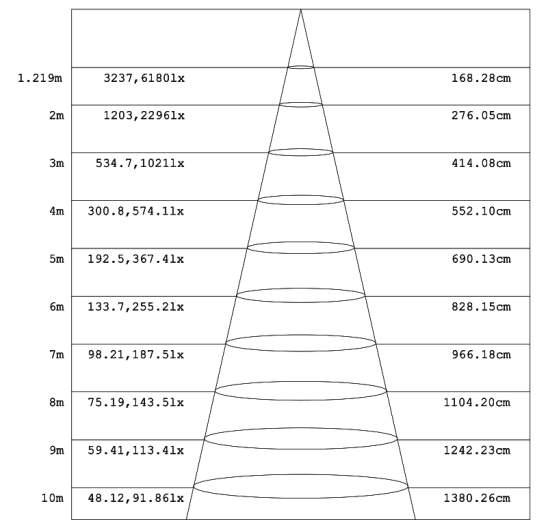
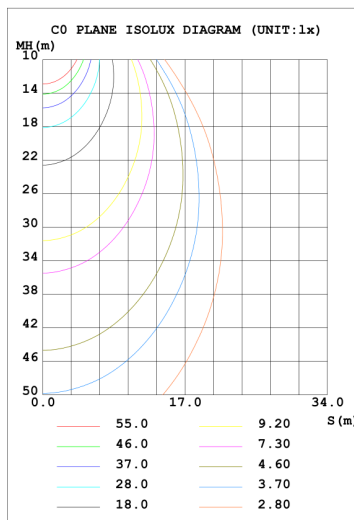
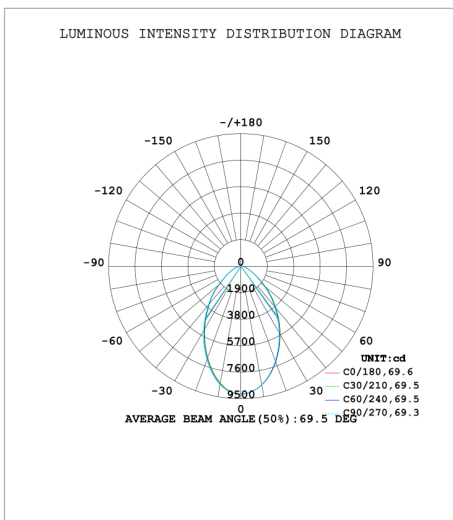
- Shell materials: Aluminum & PC.
- Finish: Black/White
- Net weight : 3.5Kg (7.7 lbs)
- Product Size: ϕ 300mm*195mm
- Carton Size: 380mm*380mm*200mm



Technical Parameters

WSD-UFO10W27-XXK-Z-E			
Power	100W	Lighting Angle	70°
Input Voltage	AC100-277V	LED Brightness Decay	<5%/6000 hrs
PF	>0.95	Working Life	>50000 hrs
Driver Efficiency	>90%	Working Temperature	-30 - +45°C
Luminous Flux	13590 Lm	Storage Temperature	-40 - +80°C
Color Temperature	4000K/5000K	Protection Level	Wet Location
CRI	Ra>80	Cable	3 core , 18AWG(1.0m)
Dimming function	0-10Vdc 12V Auxiliary power	Eff	≥130lm/W

Photometry



Example: WSD-UFO10W27-XXK-Z[D,W,B,S]-E[Blank,M]

WSD	UFO	10W	27	XXK	Z	E
Company	Product	Power	Voltage	Color Temp	Finish	Control
	UFO	10W(100W)	27	40K(4000K)	D (Dark Bronze)	M
WISDOM	UFO High Bay Light		AC100-277V	50K(5000K)±500K	B (Black) W(White) S(Silvery)	Motion sensor



Options Information:

Option Sensor: ANT-5-3



On/off control



Daylight sensor



Detection area



Stand-by period



Hold-time



Stand-by dimming level

Operating voltage 12-24Vdc

Microwave frequency 5.8 GHz ±75 MHz

Mounting height 50FT(15m) Max

Detection radius 20%/50%/75%/100%(1-8m)

Dim control output 0-10V

Temperature -4°F~+140°F(-20°C ~+60°C)

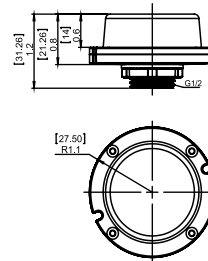
Option Sensor: ANT-5-3



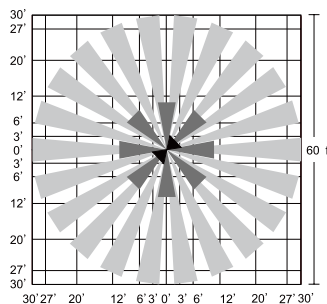
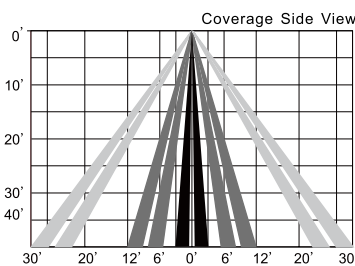
ANT-5-3



RC-100



SENSOR COVERAGE



WIRING DIAGRAMS

